

2 0 1 5 I N N O V A T I O N

COMPANY PROFILE



Updated on March 31, 2015

CONTENTS

1.....	HISTORY
2.....	LOCATION & SCALE
3.....	ORGANIZATION
4.....	CERTIFICATION 1 - 2
5.....	ACHIEVEMENTS
6.....	MAIN PRODUCTS
7.....	TEST FACILITIES 1 - 3
8.....	PRODUCTION EQUIP LIST

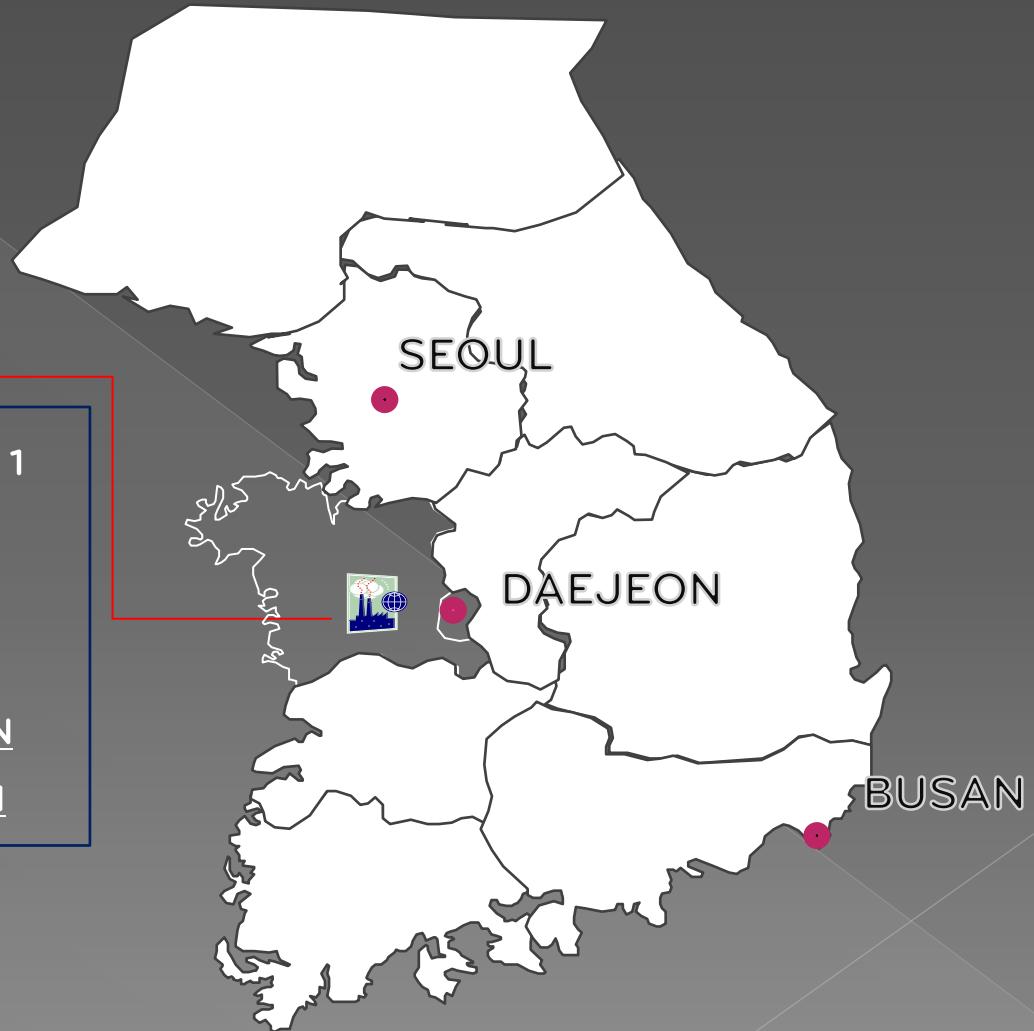
1. HISTORY

- 1989 Set up JUNGWON METAL
- 1990 Started Production of Accessories of Milling Machine
- 1994 Started Production of PISTON for Refrigerator
- 1996 Started Production of PISTON for Marine Engine
- 1997 Registered as a Military Goods Supplier
Won Korean Standards Certification -Korean Standards Association
- 2000 Made Academic-Industrial Cooperation Agreement with DAEJEON UNIV.
Made Academic-Industrial Cooperation Agreement with HONGIK UNIV.
Won ISO 9002 Certification –ISC
- 2001 Renamed as SMECO
- 2003 Acquired Certificate of Manufacturing Process issued by Korean Register of Shipping
- 2005 Started Overseas Sales (Export to more than 12 countries in the world)
- 2006 Set up CYLINDER LINER Factory
- 2008 Registered as Cooperated Supplier for STX ENPACO
- 2010 Supplying to Chinese Engine Company -CSR & Yuchai as OEM
- 2011 Sample Test of Piston for Japanese Engine company
- 2012 Supplying to Chinese OEM ZGPT, SXD
Won Certificate of Trademark by the Korean Intellectual Property

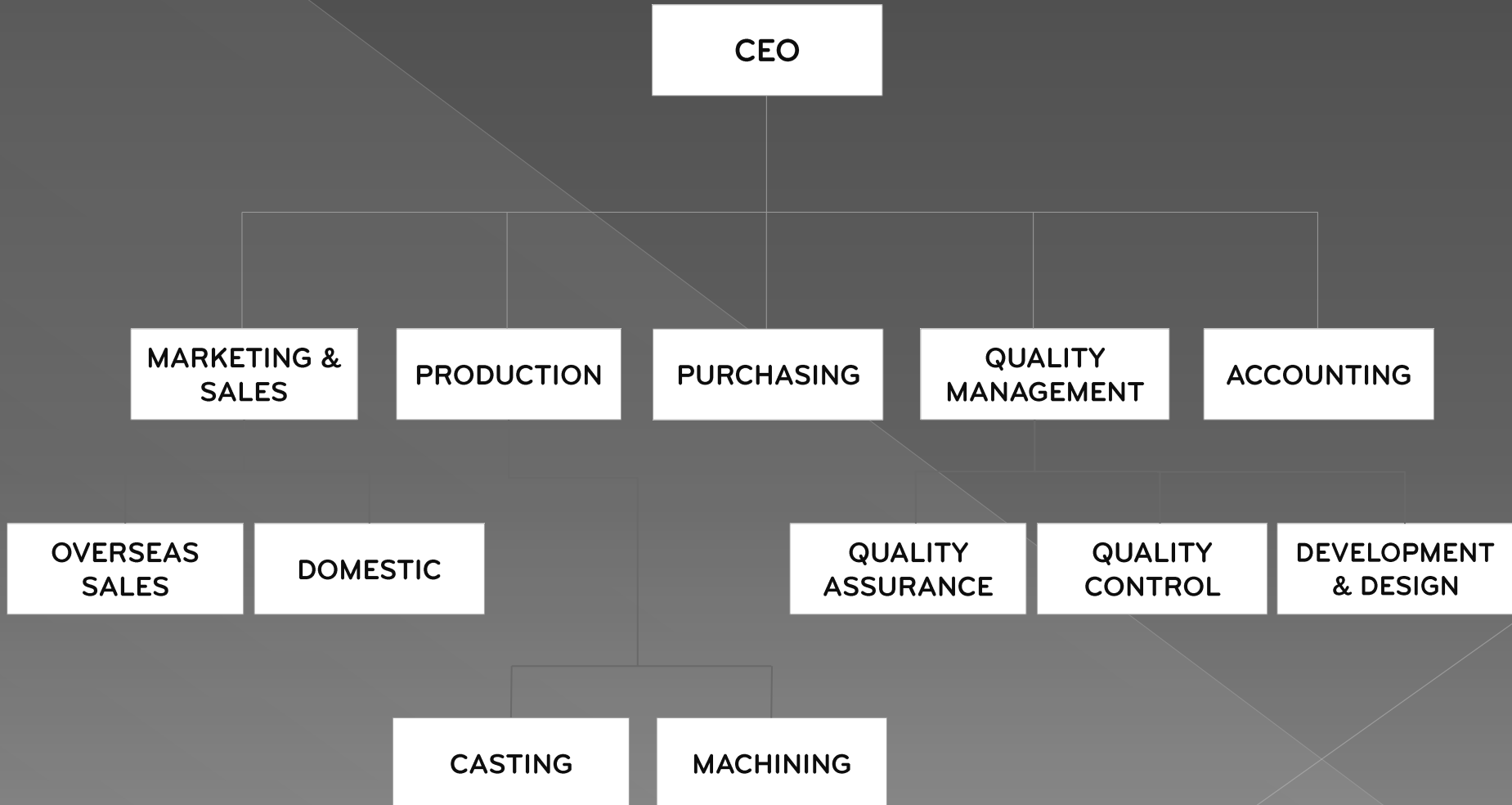
2. LOCATION & SCALE



1. HEADQUATER & FACTORY # 1
SCALE - 4,200 m²
2. FACTORY # 2 (New)
SCALE - 11,500 m²
3. OFFICE WORKER 15 PERSON
4. FIELD WORKER 35 PERSON



3. ORGANIZATION



4. CERTIFIATION - 1



**APPROVAL CERTIFICATE FOR
MANUFACTURING PROCESS**
제조법 승인 증서

Certificate No. : TJN17184-AL001 **Initial Approval** : 24th November, 2003.
Product : Aluminium Alloy
Manufacturer : SMECO
108, Eungam-Ri, Tong Myeon, Yongi-Gun, Chungnam, Korea

Product Description : Aluminium Alloy Castings
- Grade : A356-T5 acc. to KS D 6008
- Casting process : Gravity casting
- Casting weight : Max. 50 kg
- Main products : Piston for diesel engine

Approval Condition : Individual Product Certification is required.

THIS IS TO CERTIFY that the manufacturing process for the above mentioned product has been approved in accordance with the relevant requirement of this Society's Rules and / or of the recognized standards as follows and entered in the "List of Approved Manufacturer and Type Approved Equipment".
Pt. 2, Ch. 1, Sec. 8 of the Rules for Classification, Steel Ships.

This Certificate is valid until 24th November, 2015.
Reissued at Daejeon, Korea on 25th November, 2010.




한국선급
KOREAN REGISTER OF SHIPPING


()
Lee Woon-ho
General Manager of
Materials and Equipment Team

Note 1 : The approval will be automatically suspended and the Certificate become invalid from the expiry date of the Certificate in the event that the extension has not been granted or the renewal of the Certificate is not underway.
2 : The manufacturer should notify this Society of any modification or changes that may affect the validity of this Certificate.

AC-1A(2004.02)

**APPROVAL OF
MANUFACTURING(AL)**



**APPROVAL CERTIFICATE FOR
MANUFACTURING PROCESS**
제조법 승인 증서


Certificate No. : TJN17184-SC001 **Initial Approval** : 24th November, 2003.
Product : Castings
Manufacturer : SMECO
108, Eungam-Ri, Tong Myeon, Yongi-Gun, Chungnam, Korea

Product Description : Gray & Spheroidal Graphite Iron Castings
- Grade : GG & GGD acc. to KS D 4301 & 4302
- Casting process : Sand casting and centrifugal casting
- Casting weight : Max. 150 kg
- Main products : Cylinder liner, piston, etc.

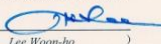
Approval Condition : Individual Product Certification is required unless otherwise specifically exempted.

THIS IS TO CERTIFY that the manufacturing process for the above mentioned product has been approved in accordance with the relevant requirement of this Society's Rules and / or of the recognized standards as follows and entered in the "List of Approved Manufacturer and Type Approved Equipment".
Pt. 2, Ch. 1, Sec. 5, Art. 505 & 506. of the Rules for Classification, Steel Ships.

This Certificate is valid until 24th November, 2015.
Reissued at Daejeon, Korea on 25th November, 2010.



한국선급
KOREAN REGISTER OF SHIPPING


()
Lee Woon-ho
General Manager of
Materials and Equipment Team

Note 1 : The approval will be automatically suspended and the Certificate become invalid from the expiry date of the Certificate in the event that the extension has not been granted or the renewal of the Certificate is not underway.
2 : The manufacturer should notify this Society of any modification or changes that may affect the validity of this Certificate.

AC-1A(2004.02)

**APPROVAL OF
MANUFACTURING(FCD&FC)**

4. CERTIFICATION -2



ISO 9001:2008



ISO 14001:2004

5. MAIN ACTIVITIES

1. **KS Kolbenschmidt GmbH.**
 - Material testing for MAN 23/30 PISTON

2. **STX METAL**
 - Supply MAN 32/40 PISTON from June 2010
 - Development of NIIGATA 22HLX, 34HLX PISTON

3. **Chinese OEM Business**
 - Scope : MAN 21/31, 32/40 PISTON
 - Customers ; ZGPT, CSR, Yuchai, SXD

4. **Japanese OEM Business**
 - NIIGATA : 16CX Under Test Process (Audit Passed)
 - YANMAR, DAIHATSU : Visiting and Inquiry

5. **Valve Seat Ring Supply**
 - HYUNDAI, DOOSAN, STX, MAN

6. MAIN PRODUCT - PISTON



AL PISTON



FCD PISTON



■ Variety Selections

ALL SELECTION

6. MAIN PRODUCT - LINER



CYLINDER LINER(FC)

7. TEST FACILITIES - 1



OPTICAL EMISSION SPECTROMETER

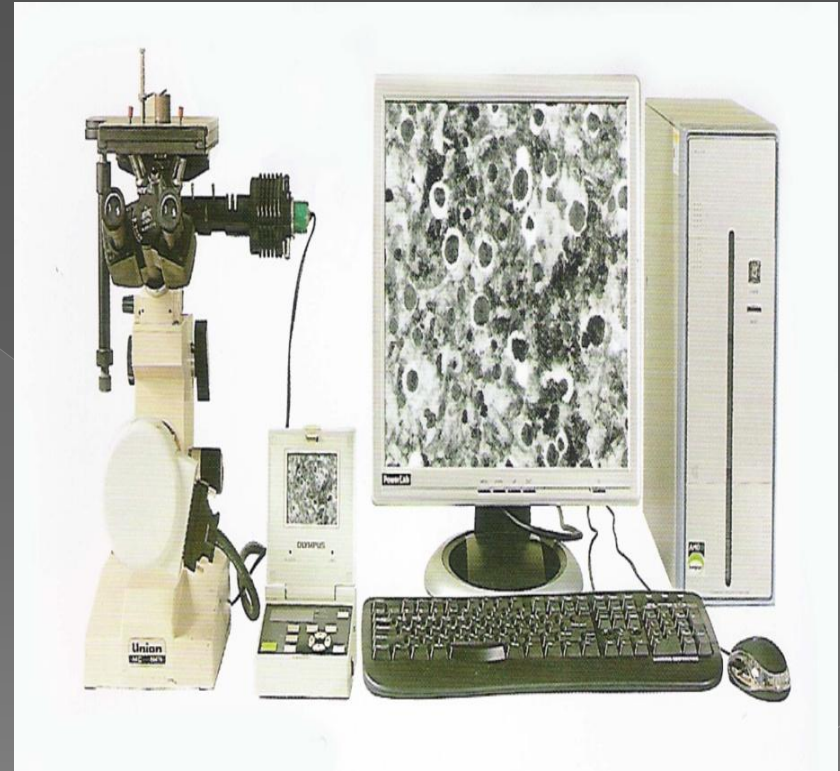


ROCKWELL HARDNESS TESTER

7. TEST FACILITIES - 2



COORDINATE MEASURING MACHINE



METALLURGICAL MICROSCOPE

7. TEST FACILITIES - 3



FLEXIBLE END SCOPE



PORTABLE HARDNESS TESTER

8. PRODUCTION EQUIP LIST

MACHINE	MODEL	COMPANY	Q'ty	MACHINE	MODEL	COMPANY	Q'ty
CNC Lathe	EOOSTAR-1	HWACHEON	5	SHOT BLAST M/C	1900*1900*2000	HANILSHOT	1
CNC Lathe	HI-ECO 31A	HWACHEON	1	Voltage Facility	22,900KV		1
CNC Lathe	QT-28N(1000U)	HWACHEON	1	INDUCTION HARDENING M/C		PSTEC	1
CNC Lathe	SKT 21	WIA	2	Centrifugal Casting M/C		USA	2
CNC Lathe	SKT 28	WIA	1	Centrifugal Casting M/C		KOREA	4
CNC Lathe	SKT300	WIA	1	Induction Hardening M/C	T-5	DONGWOO	1
CNC Lathe	SKT300L	WIA	1	High Frequency Furnace	AB5102-4002	FILLAR	1
CNC Lathe	SKT-300	WIA	1	Boring M/C	YASDA	YASDA	1
MCT(VERTICAL)	KV60	WIA	1	Endoscope	LIGHT SCOPE	MORITEX	1
MCT(VERTICAL)	VX750M	WIA	1	Coordinate Measuring M/C	SIGMA8127N	DUKIN	1
MCT(HORIZONTAL)	KH63G	WIA	2	Milling 2 nd	PM-2TH	PUM TECH	1
UNIVERSAL TOOL AND CUTTER GIRNDR	HOT-3000	HAWCHEON	1	MCT	VX 55N	WIA	1
OVAL TURNING	HOT-300	HWACHEON	1	HONING M/C	3010A	FUJI	1
RADIAL DRILL M/C	PRO1100	PARKA	1	AL FURNACE	CWAM-350	CHUNG-U	2
PINHOLE M/C		U-CHANG	1	MCT	KH-63H	WIA	1

BETTER TODAY, BETTER TOMORROW

THANK YOU!



※ CONTACT POINT

Chang-Hyo, Lee (Oliver)/ Chief Manager (Mob +82 10 2924 8387) Tel. +82 44 864 3030